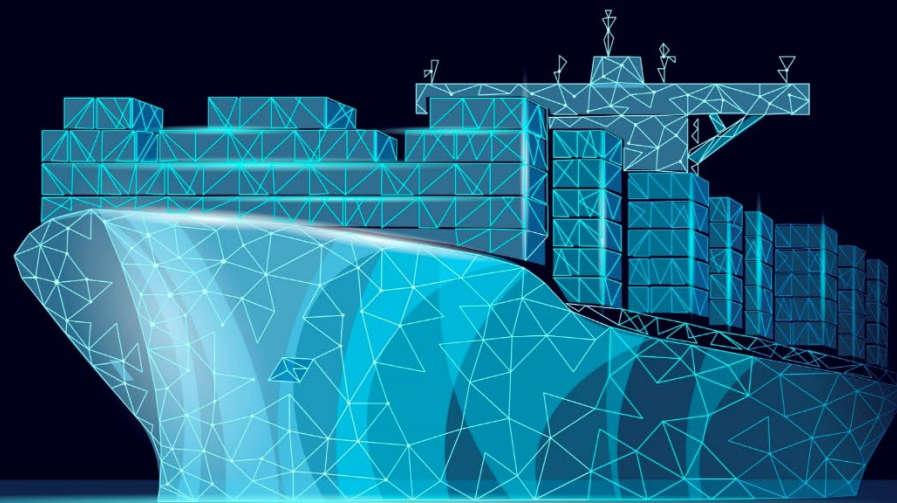
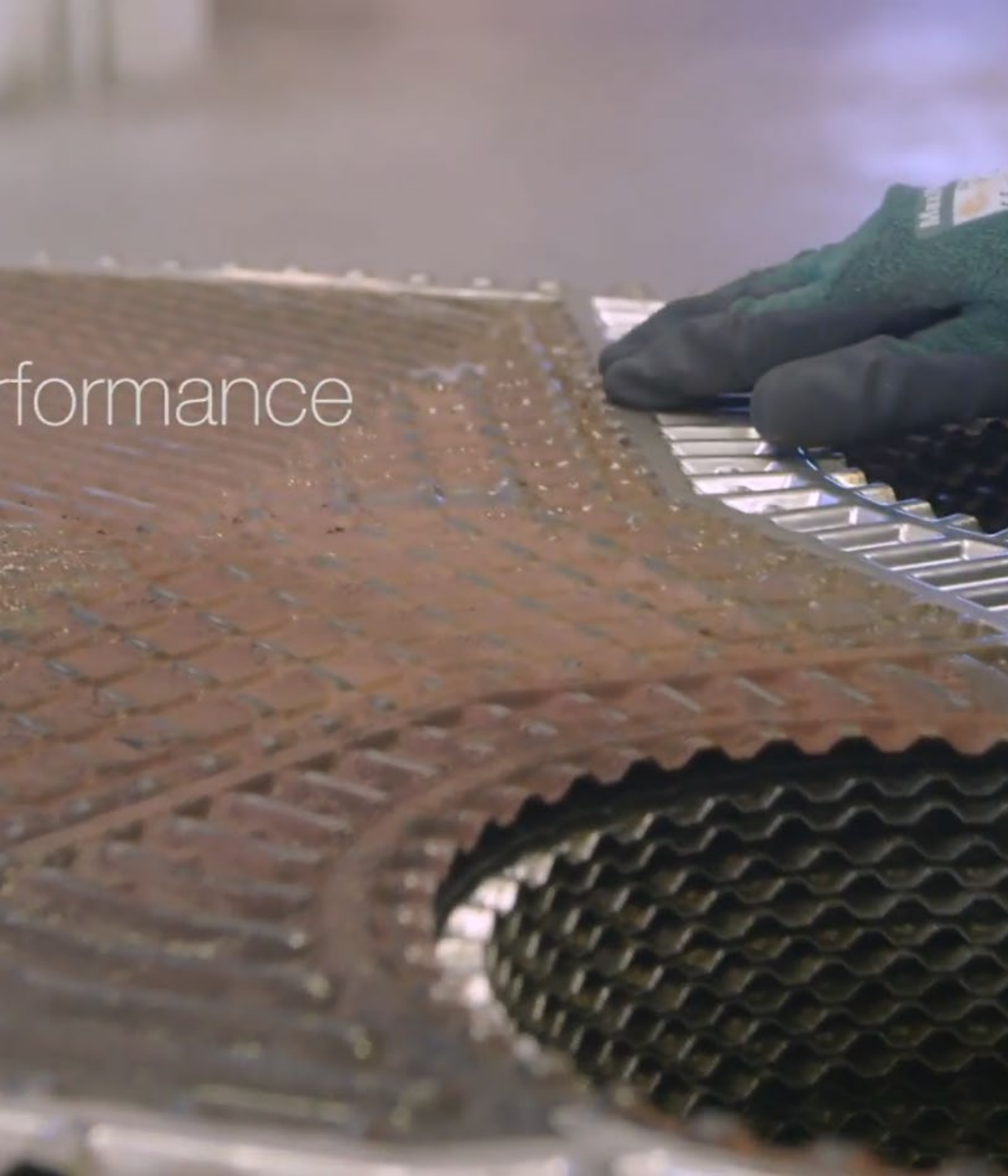


板片再生服務 Reconditioning





Why is reconditioning needed? ⁶

A Gasketed Plate Heat Exchanger in good condition allows **optimal performance** and **reduced lifecycle cost**.

GPHEs need reconditioning when:

- Performance has decreased (higher outlet temperature or increased pressure drop)
- Gaskets between the plates are approaching end of life – or the unit is leaking

How the service can be delivered



On site



Remotely



At service centres



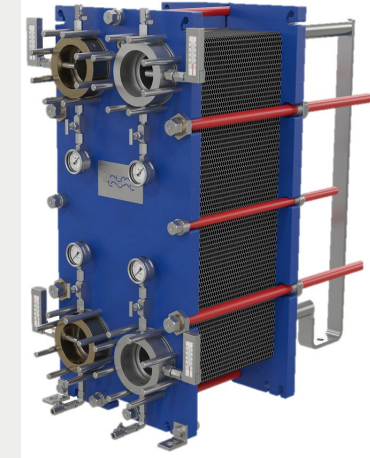
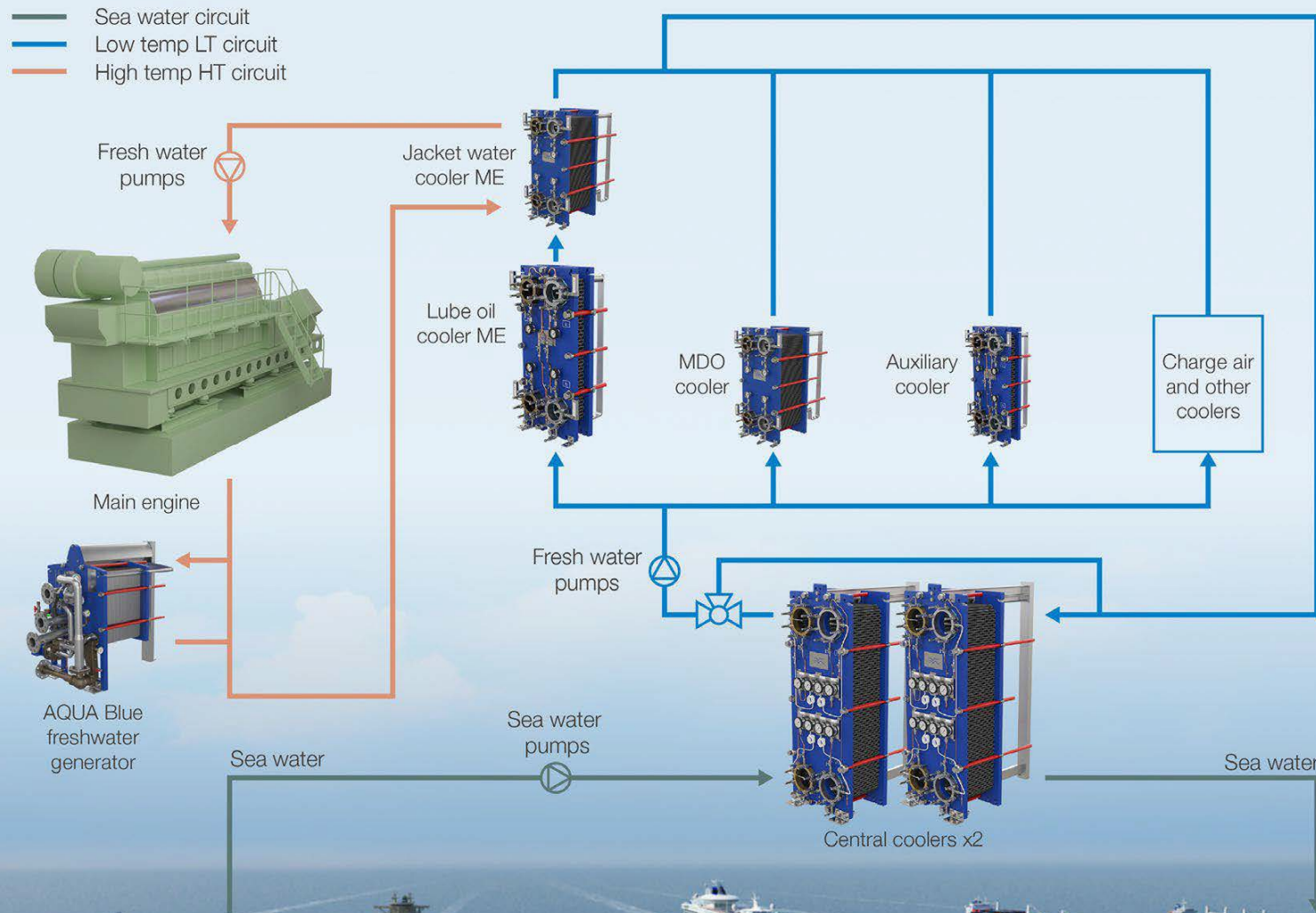
On board



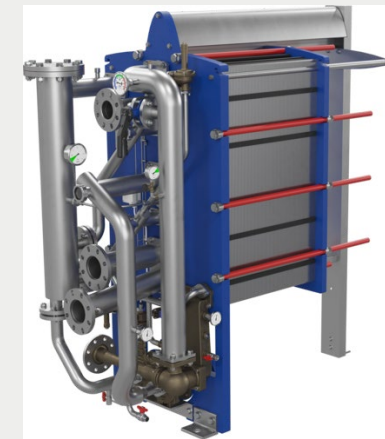
In dry dock

Marine Heat Transfer

7

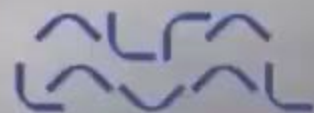


- Jacket water cooler
- M/E LO cooler
- Central cooler
- A/E cooler



- Freshwater generator (AQUA E2) new! Alfa Laval





Alfa Laval heat exchanger features

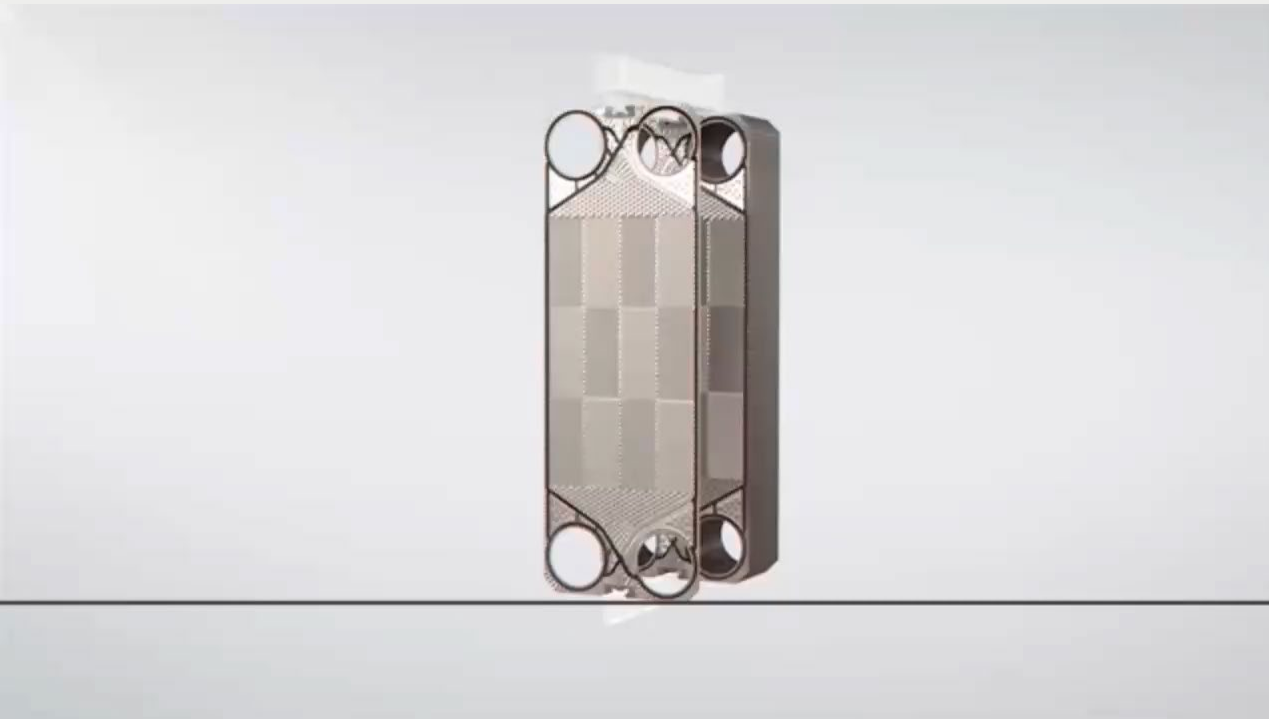
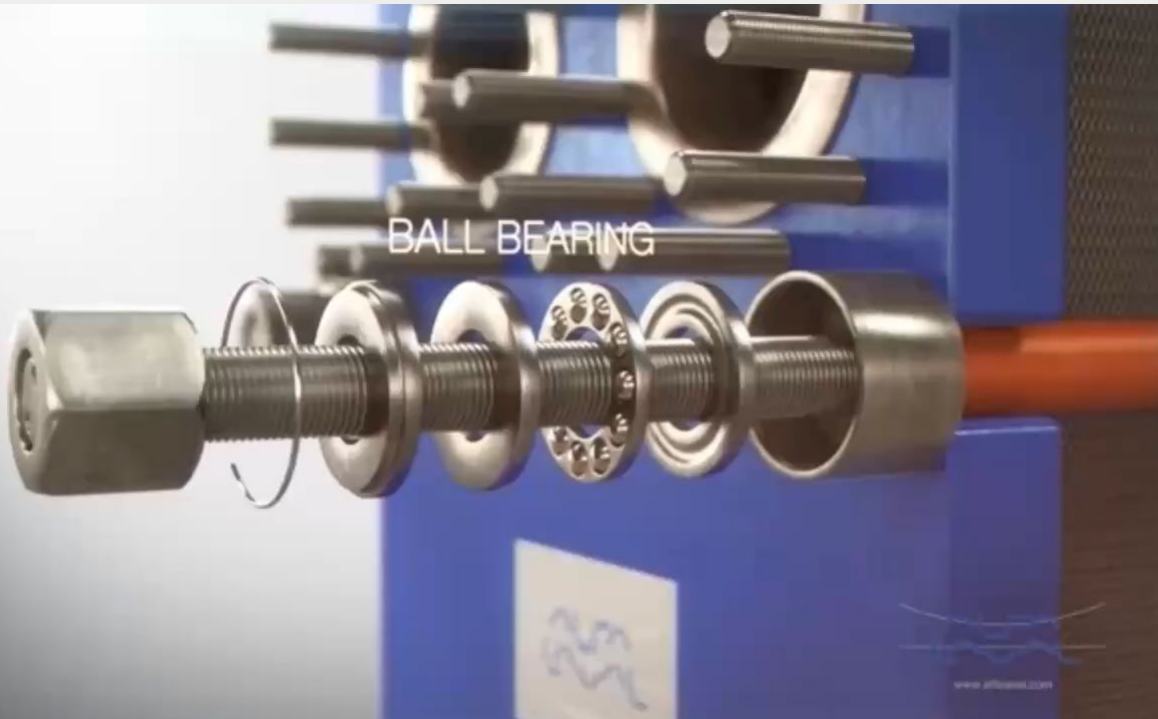
10



Bearing boxes

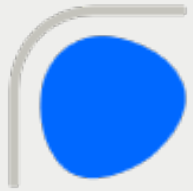


Five-point alignment



Alfa Laval heat exchanger features

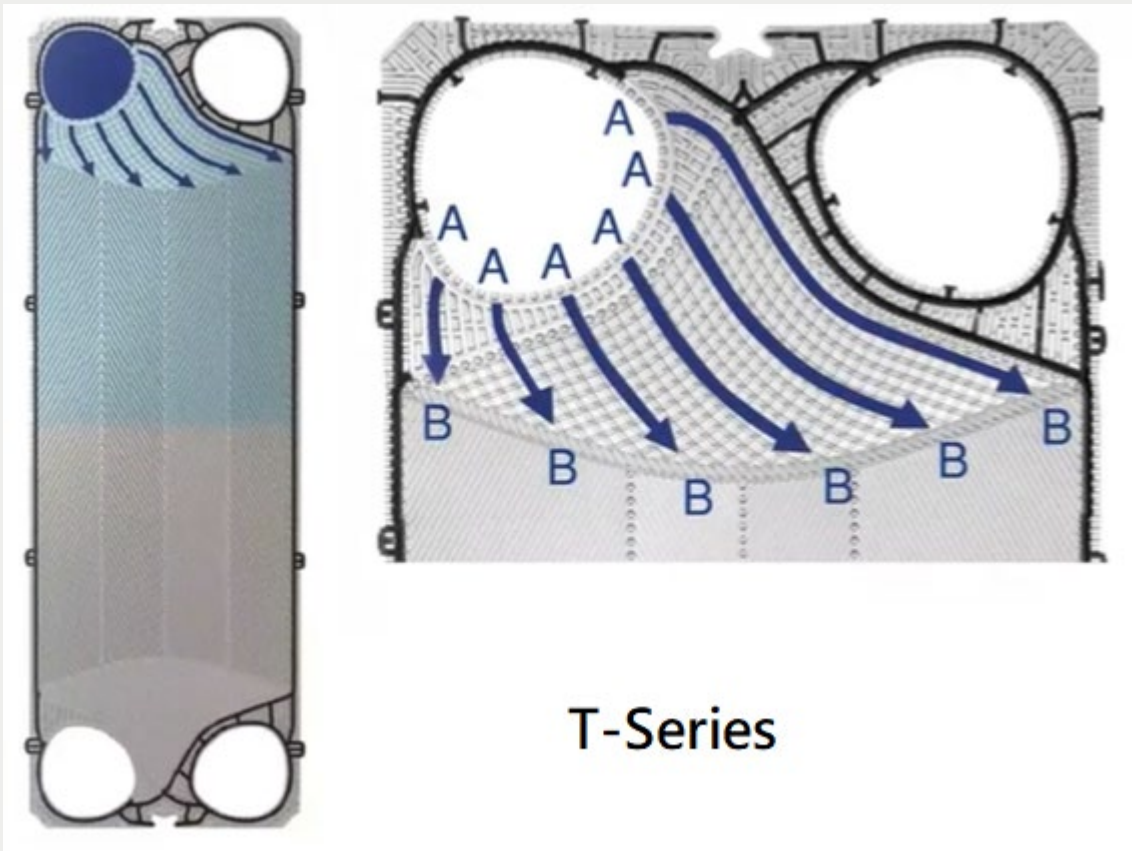
11



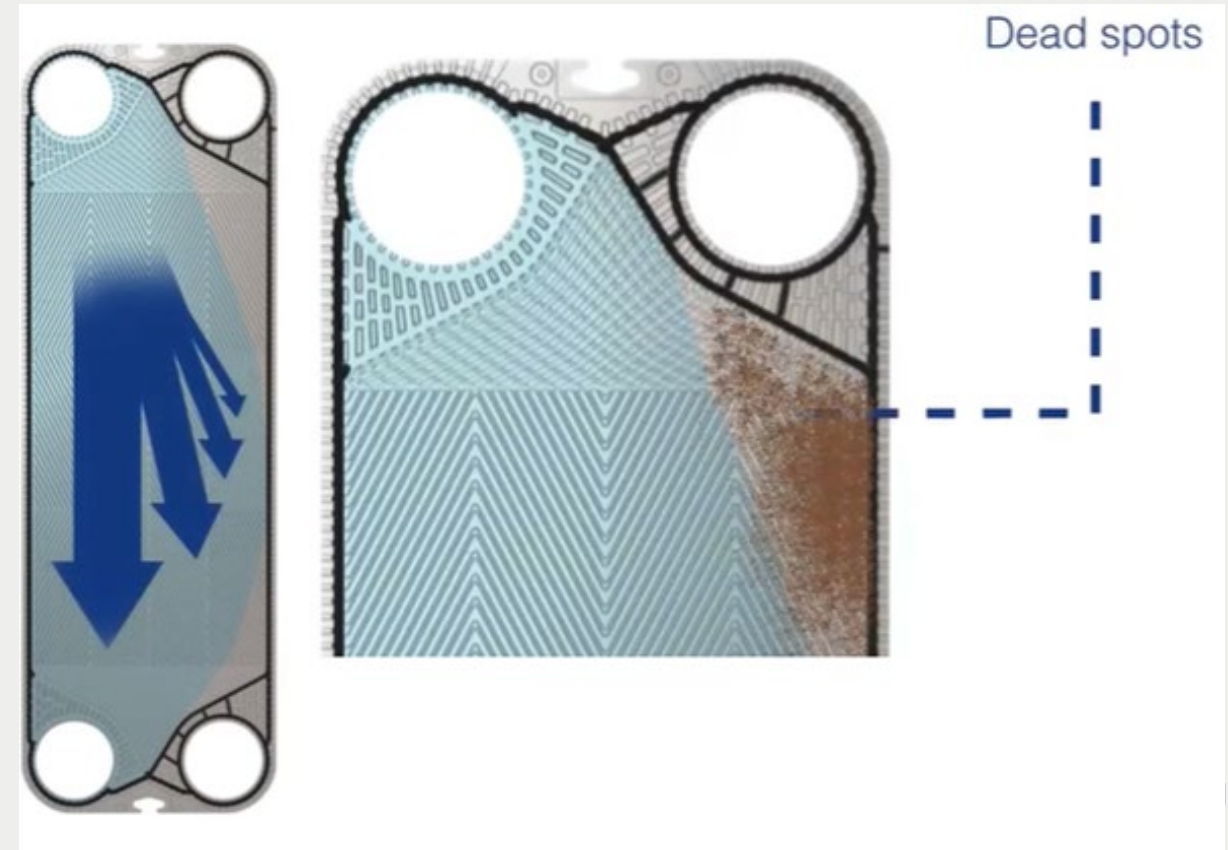
OmegaPort™



CurveFlow™

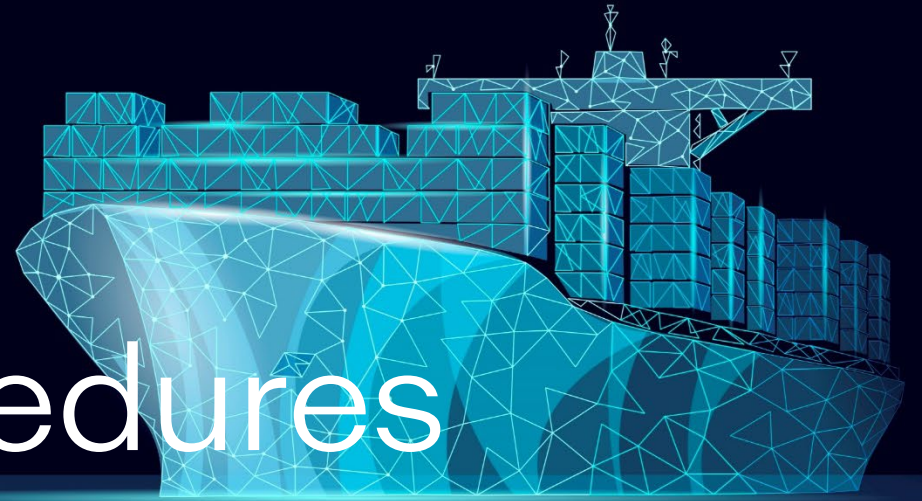


T-Series

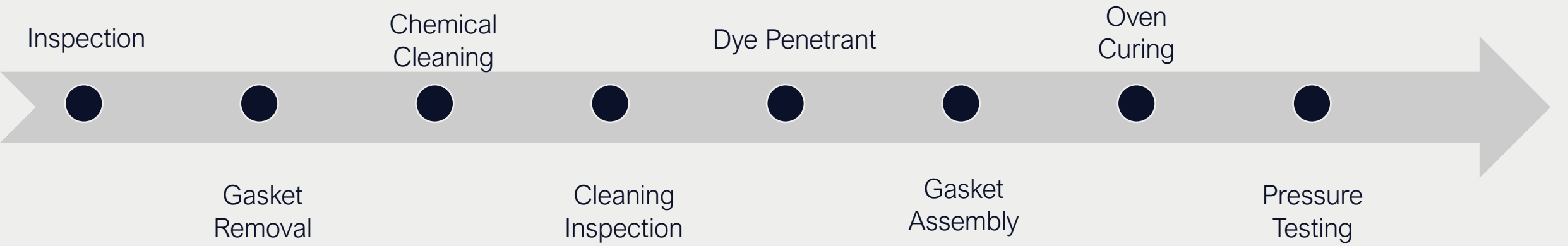


板片再生流程

Reconditioning Procedures



How we do it



Open tightening bolt

14



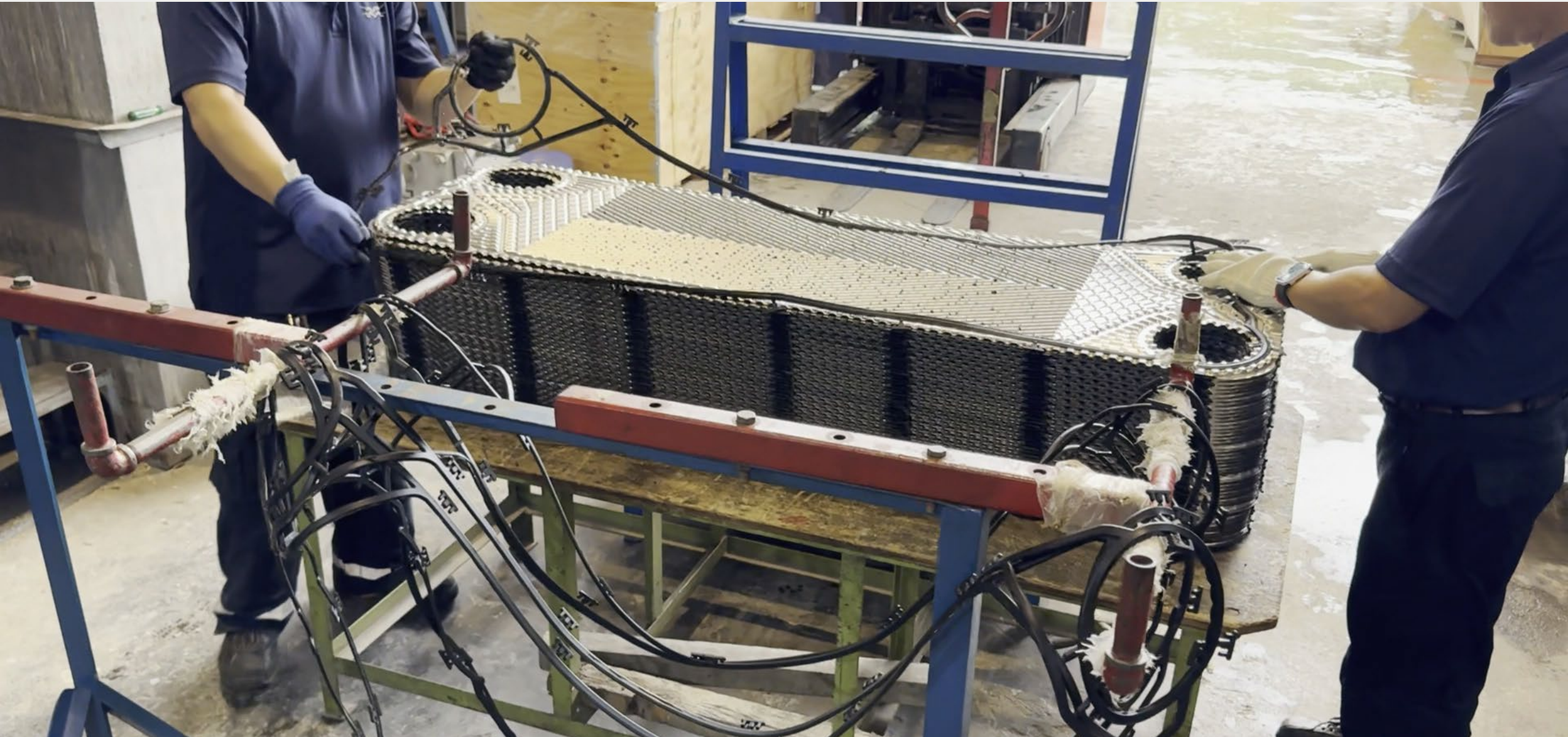
Open the plate pack

15



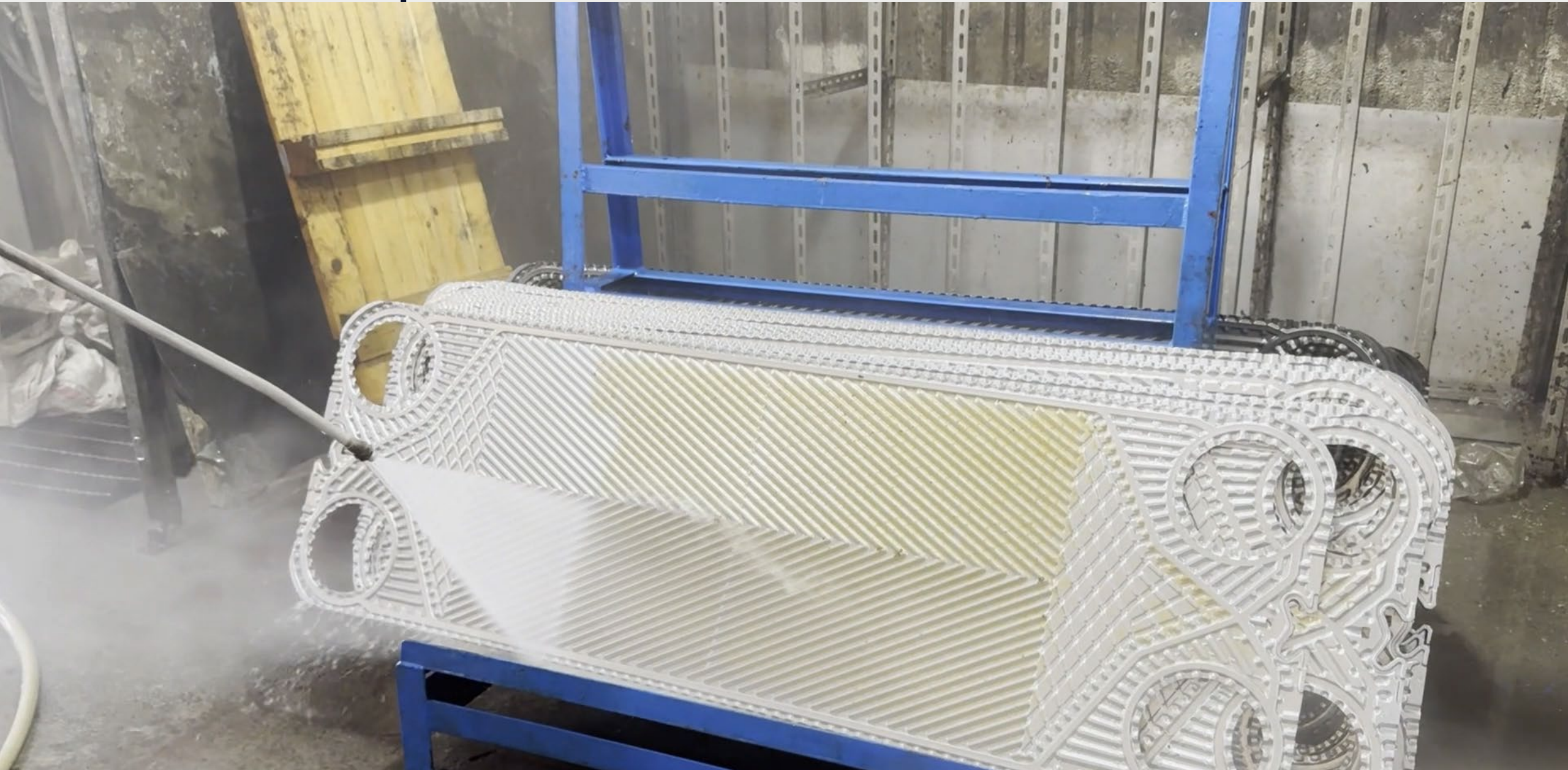
Gasket removal

16



PreClean plates

17



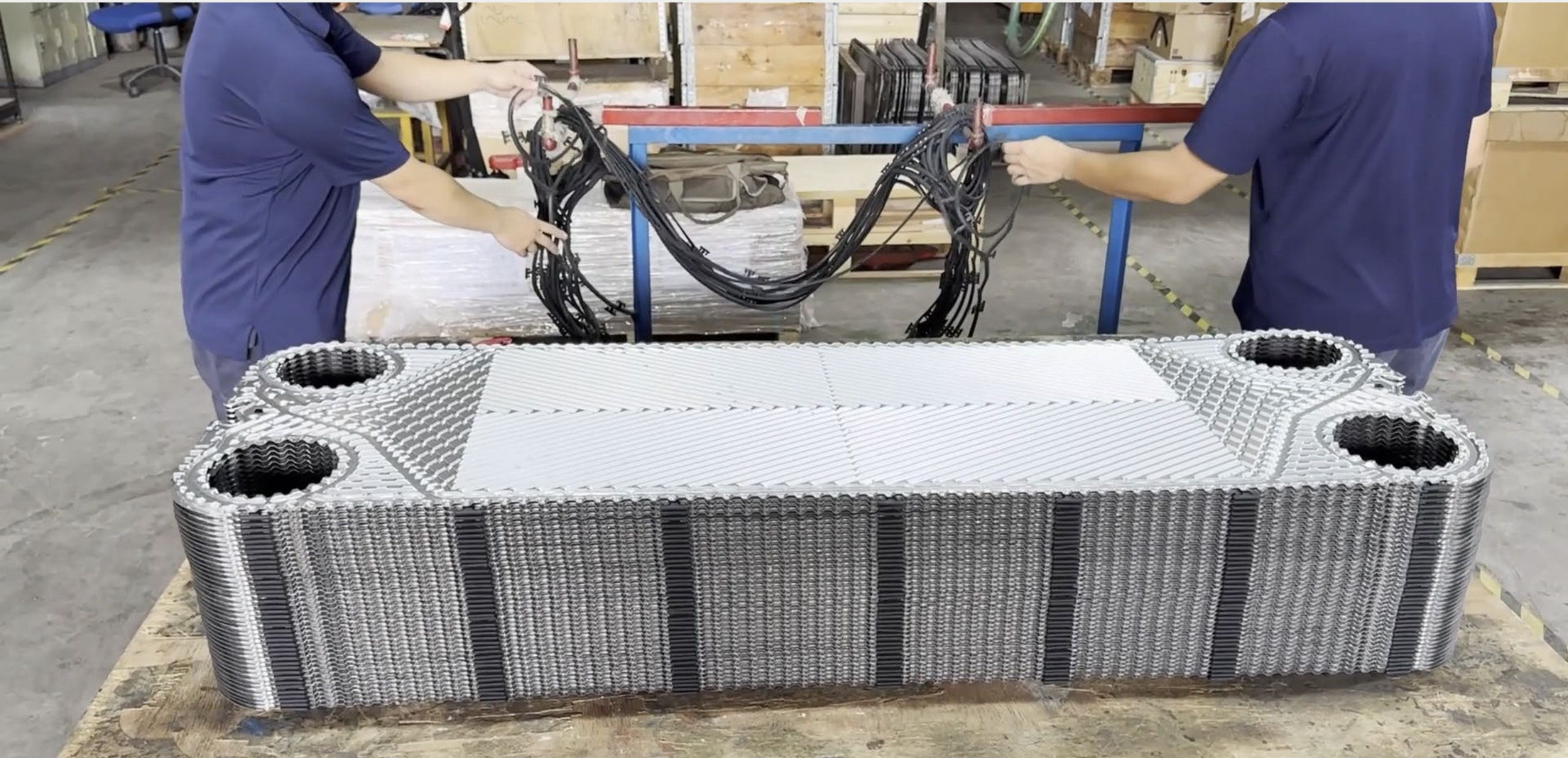
Chemical cleaning

18

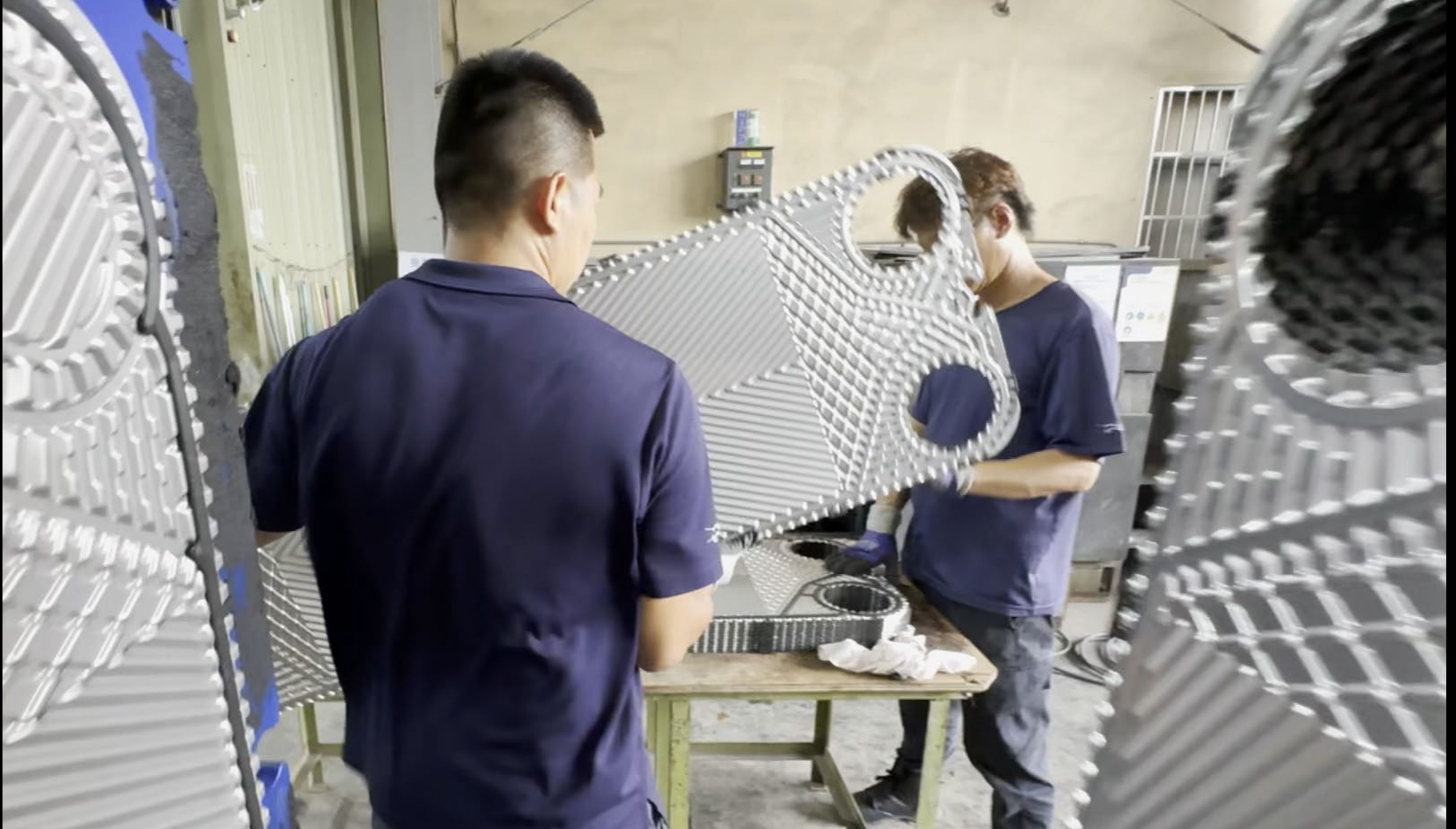


Assemble gaskets

19



Assemble plates



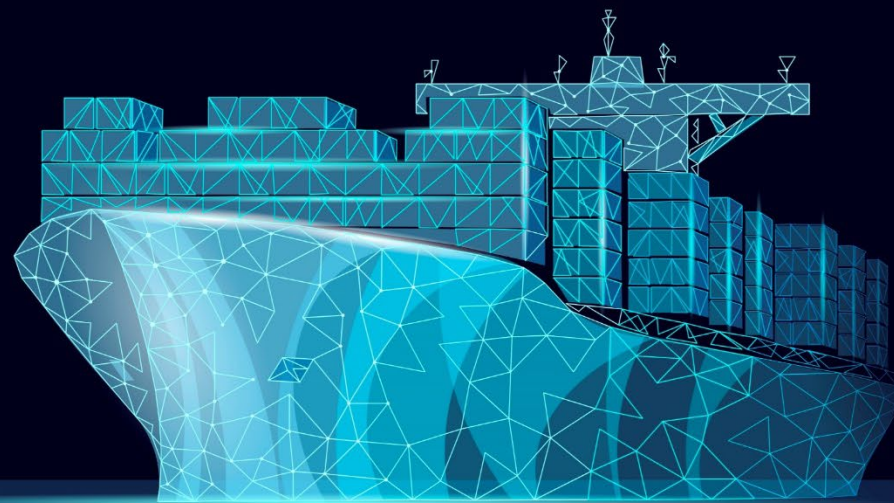
Pressure testing

21



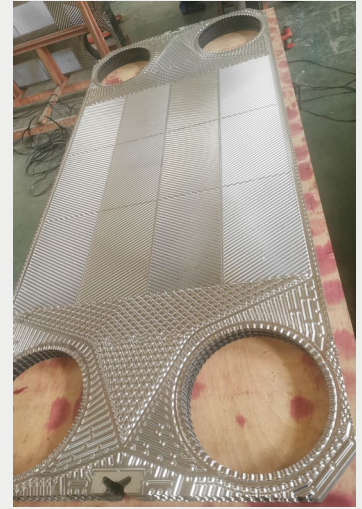
案例分享

Case Sharing



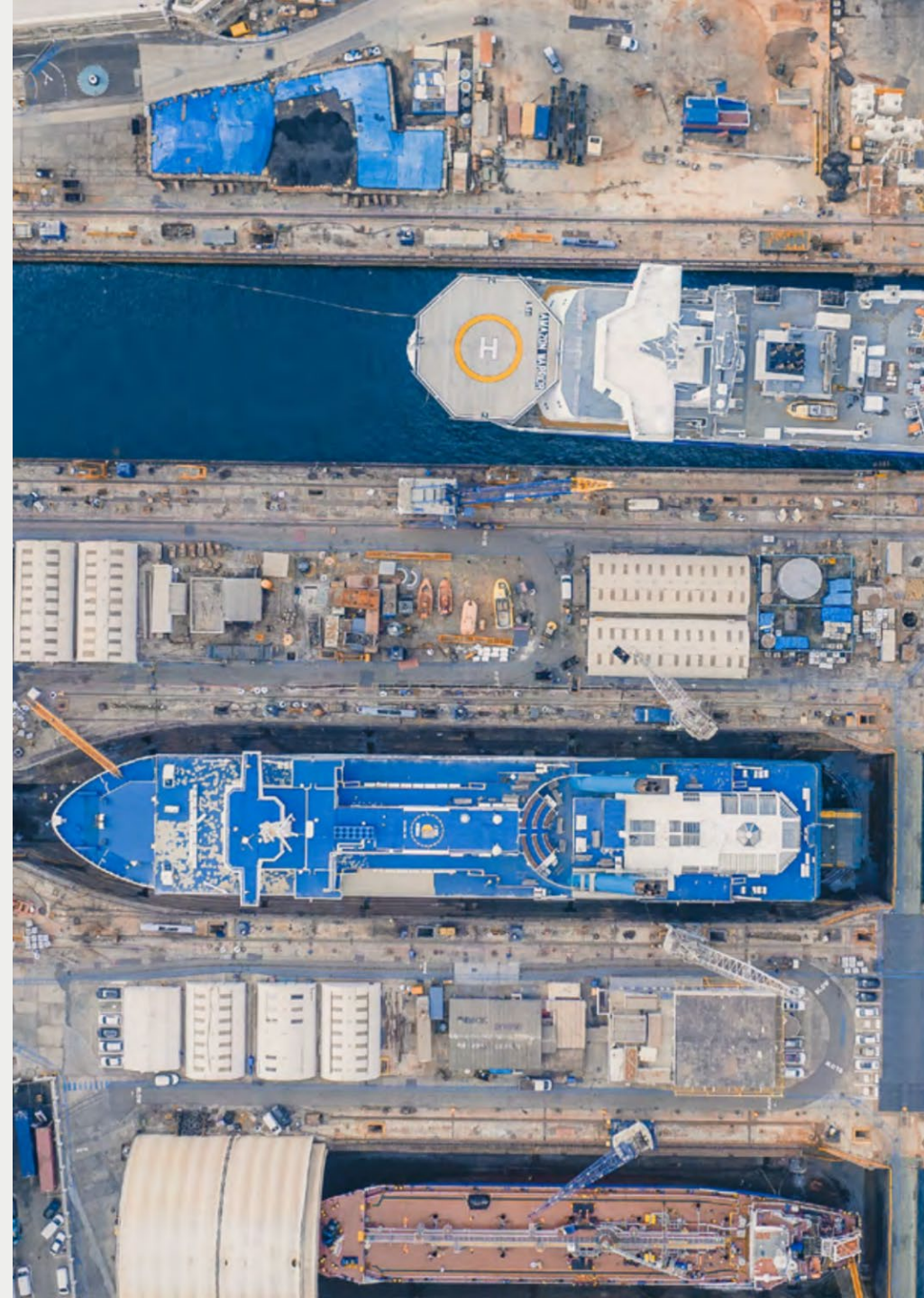
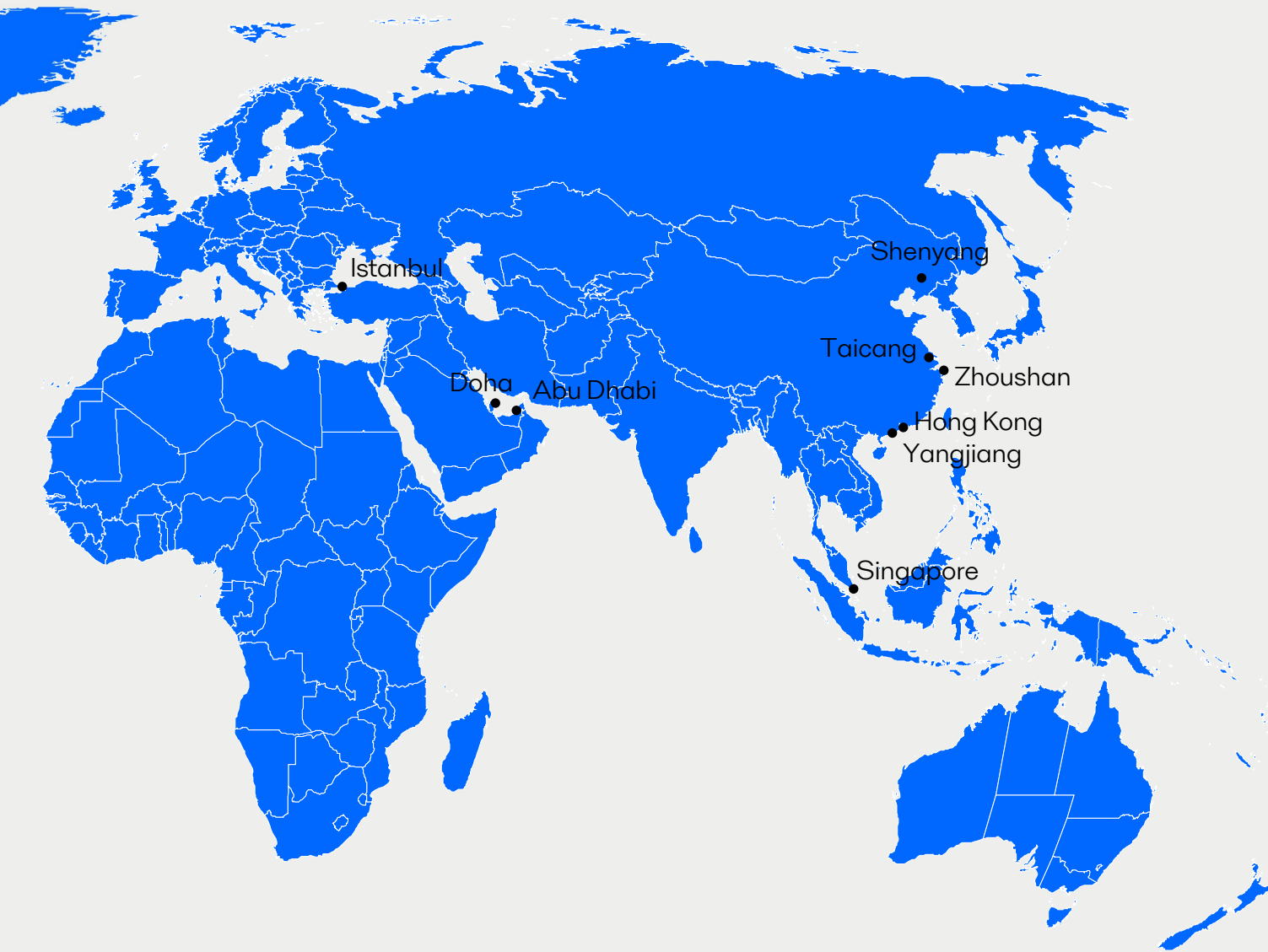
Case story

Containership



Global service centers

Near major docking hubs



聯絡我們

Alfa Laval在台灣

電話：+ 886 2 2658 8881

郵件：taiwan.info@alfalaval.com



Pioneering Positive Impact